

高雄醫學大學 函

機關地址：80708高雄市三民區十全一路
100號

承辦人：姚卿騰

電話：(07)3121101轉2627

傳真電話：(07)3218364

電子信箱：angusyao@kmu.edu.tw

受文者：國立雲林科技大學

發文日期：中華民國108年8月29日

發文字號：高醫院護字第1081102990號

速別：普通件

密等及解密條件或保密期限：

附件：如說明所示(附件一 1081102990-1.docx、附件二 1081102990-2.jpg)

主旨：本校謹訂於108年10月21日（星期一）舉辦2019年『亞太長期照顧國際論壇（2019 Asia-Pacific Forum for Long-term Care in Aging）』，敬請協助轉知相關系所及縣市各醫療院所、護理之家、養護中心等單位，並鼓勵踴躍報名參加，請查照。

說明：

- 一、本次國際論壇主題為「面對高齡社會與長期照顧的未來」，邀請來自東亞、太平洋地區的高齡長期照顧政策與照護實證研究專家，就日本、韓國、澳洲、馬來西亞、香港、臺灣的長期照顧政策方向、以及實證長期照護方案之研究實踐等面向進行分享與討論。
- 二、辦理時間：108年10月21日（星期一），上午9時至下午4時。
- 三、辦理地點：高雄醫學大學第一教學大樓B1演藝廳（高雄市三民區十全一路100號）。
- 四、名額：240人。
- 五、參加對象：





(一)醫學、護理、復健、社會工作、長照照顧、老人照顧、社會福利、健康管理、成人教育、社會教育、醫務管理、公共衛生等相關科系師生。

(二)長期照顧、老人服務相關單位產官學人士。

(三)關注本論壇議題的大專校院師生、社會大眾。

六、報名方式：請於報名截止108年10月14日（星期一）前，額滿提前截止，進入線上報名系統（<https://pse.is/ECED9>）或用手機行動條碼掃描器掃描海報報名表單QRcode，完成報名程序。

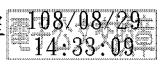
七、費用：免費。

八、報名事宜洽詢（07）312—1101分機2612溫淑慧助教。

九、檢附國際論壇簡章、海報電子檔各1份，檔案可至<https://is.gd/q7k2VC>下載。

正本：各公私立大專校院、新北市政府社會局、臺北市政府社會局、桃園市政府社會局、臺中市政府社會局、臺南市政府社會局、高雄市政府社會局、宜蘭縣政府社會處、新竹縣政府社會處、苗栗縣政府社會處、彰化縣政府社會處、南投縣政府社會及勞動處、雲林縣政府社會處、嘉義縣社會局、屏東縣政府、臺東縣政府社會處、花蓮縣政府社會處、澎湖縣政府社會處、基隆市政府社會處、新竹市政府社會處、嘉義市政府社會處、金門縣政府社會處、基隆市衛生局、臺北市政府衛生局、新北市政府衛生局、桃園市政府衛生局、新竹縣政府衛生局、新竹市衛生局、苗栗縣政府衛生局、臺中市政府衛生局、彰化縣衛生局、南投縣政府衛生局、雲林縣衛生局、嘉義縣衛生局、嘉義市政府衛生局、臺南市政府衛生局、高雄市政府衛生局、屏東縣政府衛生局、宜蘭縣政府衛生局、花蓮縣衛生局、臺東縣衛生局、澎湖縣政府衛生局、金門縣衛生局、連江縣衛生福利局

副本：本校高齡長期照護碩士學位學程



2019 Asia-Pacific Forum for Long-term Care in Aging: Facing the Aged Society and Future of Long-term Care



Date

October 21st, 2019

Venue

B1 Floor, Conference Hall, First Teaching Building,
Kaohsiung Medical University

Organized by

College of Nursing
Master Program of Long-term in Aging
Center for Long-term Care Research
School of Nursing
Kaohsiung Medical University

Sponsored by

National Health Research Institutes

2019 Asia-Pacific Forum for Long-term Care in Aging: Facing the Aged Society and Future of Long-term Care

In light of the trend of population aging, Kaohsiung Medical University and National Health Research Institutes cooperate to host this forum. Experts and scholars of long-term care policy and evidence-based research in aging from Asia-Pacific countries, such as Japan, Korea, Australia, Malaysia, Hong-Kong, and Taiwan, are invited to share their unique developing experience and research outcomes to provide suggestions for policy planning, clinical program developing, and practical service operation and administration.

1. Date:

October 21st, 2019

2. Venue:

No. 100, Shih-Chuan 1st Rd., San-Min Dist., Kaohsiung City 80708, Taiwan
B1 Floor, Conference Hall, First Teaching Building, Kaohsiung Medical University

3. Organized By

College of Nursing, Master Program of Long-term in Aging

Center for Long-term Care Research, Kaohsiung Medical University, Taiwan

4. Sponsored by

National Health Research Institutes

5. Participant:

All researchers, teachers, and students in related departments of long-term care in universities and colleges, and healthcare staffs in all kinds of long-term care units and institutions.

6. Contact information:

Assistant Professor Ching-Teng Yao

Email: angusyao@kmu.edu.tw; TEL: 886-7-312-1101 ext. 2627

Agenda

Time	Topic	Speaker	Moderator
8:30-9:00 am	Registration		
9:00-9:15 am	Opening Remarks	President Yuh-Jyh Jong 鍾育志校長 Deputy Minister Jui-Yuan Hsueh 薛瑞元次長 Chair Professor Hsin-Su Yu 余幸司講座教授 Associate Director Po-Huang Chiang 江博煌副執行長	
9:15-9:20 am	Introduction to the Forum	Vice President for Global Affairs, Kuei-Min Chen	
Policy for Long-Term Care in Aging			
9:20-9:50 am	Aged Care in Japan: Past, Current and Future	Professor Hidenori Arai	Professor Kuei-Min Chen 陳桂敏國際長
9:50-10:20 am	Long-Term Care Insurance in South Korea	Professor Ju Young Yoon	
10:20-10:50 am	Long-term Care of National Policy in Taiwan	Deputy Minister Jui-Yuan Hsueh	
10:50-11:10 am	Coffee Break		
11:10-12:00 am	Panel Discussion	Professor Hidenori Arai Professor Ju Young Yoon Deputy Minister Jui-Yuan Hsueh	Professor Kuei-Min Chen 陳桂敏國際長
12:00-1:30 pm	Lunch		
Evidence-Based Research for Long-Term Care in Aging			
1:30-2:00 pm	Patterns of Aged Care Use among Older Australian: A Prospective Cohort Study Using Linked Data	Professor Julie Byles	Professor Bih-O Lee 李碧娥院長
2:00-2:30 pm	Falls Research in Malaysia	Professor Maw Pin Tan	
2:30-3:00 pm	Service model development for an ageing population: A narrative from Hong Kong on developing evidence-based policies	Professor Claudia Lai	
3:00-3:20 pm	Coffee Break		
3:20-4:10 pm	Panel Discussion	Professor Julie Byles Professor Maw Pin Tan Professor Claudia Lai	Professor Bih-O Lee 李碧娥院長
4:10 pm	Closing		
6:00 pm	Gala Dinner		By invitation

Speakers Introduction (sorted by order of presentation)

Yuh-Jyh Jong

President and Professor, Kaohsiung Medical University, Taiwan

Hsueh Jui-Yuan

Deputy Minister, Ministry of Health and Welfare, Taiwan

Hsin-Su Yu

Chair Professor, Kaohsiung Medical University, Taiwan

Po-Huang Chiang

Associate Director, National Health Research Institutes Forum, Taiwan

Kuei-Min Chen

Professor and Director, Master Program of Long-Term Care in Aging

Director, Center for Long-term Care Research

Vice President for Global Affairs, Kaohsiung Medical University, Taiwan

Hidenori Arai

Professor and President, National Center for Geriatrics and Gerontology, Japan

Ju Young Yoon

Professor, College of Nursing, Seoul National University, Republic of Korea

Bih-O Lee

Professor and Dean, College of Nursing, Kaohsiung Medical University, Taiwan

Julie Byles

Professor and Director, Priority Research Centre for Generational Health and Ageing,

University of Newcastle, Australia

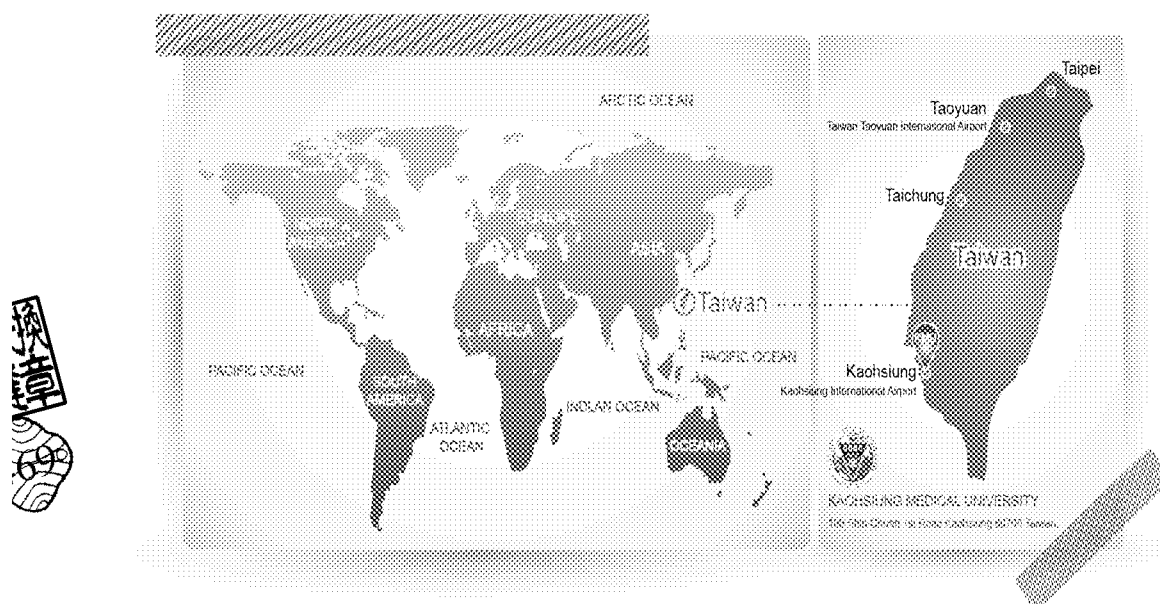
Maw Pin Tan

Professor, Department of Geriatric Medicine, University of Malaya, Malaysia

Claudia Lai

Professor, School of Nursing, Hong Kong Polytechnic University, Hong Kong

Transportation



Direction

Plane

From Kaohsiung International Airport, take a taxi for approximately 30 minutes to the campus. Alternatively, take the red-line MRT uptown to Houyi Station. It takes approximately 15 minutes to the campus by foot.

Rail

From the Kaohsiung Railway Station, take a taxi for approximately 5 minutes to the campus or the red-line MRT uptown to Houyi Station. It takes approximately 15 minutes from the Houyi Station to the campus by foot.

High Speed Rail

From the Zuoying Station, take the red-line MRT downtown to Houyi Station. It takes approximately 15 minutes from the Houyi Station to the campus by foot. Cabs are available at the Zuoying Station.

Driving

From Northern Taiwan, follow the National Highway No.1 south to the Dinjin Exit. Turn left and follow Mintsu (Mingzu) Road to Tongmeng Road. Turn right at the intersection and drive west for a short distance. The entrance of the KMU will be on your left, across from a small park.

Alternatively, follow the National Highway No.1 south to Jiouru (Jiuru) Exit. Follow Jiouru (Jiuru) Road to Zihyou (Ziyu) Road. Turn right at the intersection to the entrance of the university, just north of the main entrance to KMU Hospital.

交通指引



- 火車高雄站後站出口距本校約兩公里，車程約 5 分鐘。
- 小港機場轉搭計程車約 30 分鐘。
- 開車沿中山高速公路南下，
 - 下「鼎金交流道」於民族路左轉，再於同盟路右轉，即達本校。
 - 下「九如交流道」沿九如路往火車站方向，於自由路右轉，遇同盟路右轉，即達本校。
- 高鐵車站轉搭計程車約 17 分鐘，沿大中路於自由路右轉，再於同盟路左轉即達本校。
- 高捷車站轉搭捷運接駁公車，由後驛站出入口 2搭乘紅 29 接駁車，即達本校。



停車資訊

- 本校第一、第二來賓停車場：在附設醫院內，由自由路進入，費用每小時 30 元計(30 分鐘內以 15 元計, 超過 30 分鐘以 30 元計)，第一來賓停車場地面有機車停車場，費用每次 20 元計。
- 同盟路上路邊收費停車格。

Asia-Pacific Forum for Long-term Care in Aging: Facing the Aged Society and Future of Long-term Care



B1 Floor, Conference Hall,
First Teaching Building,
Kaohsiung Medical University

10/21

2019

Monday

Invited Speakers



Hidenori Arai, Japan
Professor and President
National Center for Geriatrics and
Gerontology



Ju Young Yoon, Republic of
Korea
Professor
College of Nursing, Seoul National
University



Hsueh Jui-Yuan, Taiwan
Deputy Minister
Ministry of Health and Welfare



Julie Byles, Australia
Professor and Director
Priority Research Centre for
Generational Health and Ageing,
University of Newcastle



Maw Pin Tan, Malaysia
Professor
Department of Geriatric Medicine,
University of Malaya



Claudia Lai, Hong Kong
Professor
School of Nursing, Hong Kong
Polytechnic University

Registration: <https://forms.gle/tT5GVowAvD2p8Ws8>
Online Registration Deadline: 10/8/2019
Maximum Number of Participants: 240

Time	Topic
8:30-9:00 am	Registration
9:00-9:15 am	Opening Remarks
9:15-9:20 am	Introduction to the Forum
Policy for Long-Term Care in Aging	
9:20-9:50 am	Aged Care in Japan: Past, Current and Future
9:50-10:20 am	Long-Term Care Insurance in South Korea
10:20-10:50 am	Long-term Care of National Policy in Taiwan
10:50-11:10 am	Coffee Break
11:10-12:00 am	Panel Discussion
Evidence-Based Research for Long-Term Care in Aging	
1:30-2:00 pm	Patterns of Aged Care Use among Older Australian: A Prospective Cohort Study Using Linked Data
2:00-2:30 pm	Falls Research in Malaysia
2:30-3:00 pm	Service model development for an ageing population: A narrative from Hong Kong on developing evidence-based policies
3:00-3:20 pm	Coffee Break
3:20-4:10 pm	Panel Discussion & Closing Remarks



Contact information: Assistant Professor Ching-Teng Yao
Email: angusyao@kmu.edu.tw; TEL: 886-7-312-1101 ext. 2627

Sponsored by

Organized by



高雄醫學大學
高齡長期照護
碩士學位學程



高雄醫學大學
護理學院
Kaohsiung Medical University
College of Nursing



高雄醫學大學
護理學系
Kaohsiung Medical University
Department of Nursing



高雄醫學大學
長生護理研究中心
Kaohsiung Medical University
Center for Long-Term Care Research